



CompetentNL

Copenhagen 20-4-2023, Jeroen Bovenlander



competentnl



CompetentNL: National standard for skills

- Collaboration between PES, National Bureau for Statistics, TNO and qualification institution for education
- Endorsed by ministry of Education and ministry of Labour and Social Services
- Detailed and verified data set about occupations, skills and qualifications
- 2024: open source, national standard



What is CompetentNL?

- Skills-oriented approach of labour market and education
- Links between skills, occupation and education
- National skills language
- Free and unlimited availability for skills application providers
- Feedback via market review (wide range of stakeholders)
- Enrich data with AI techniques



Why skills?

Issues on the labour market:

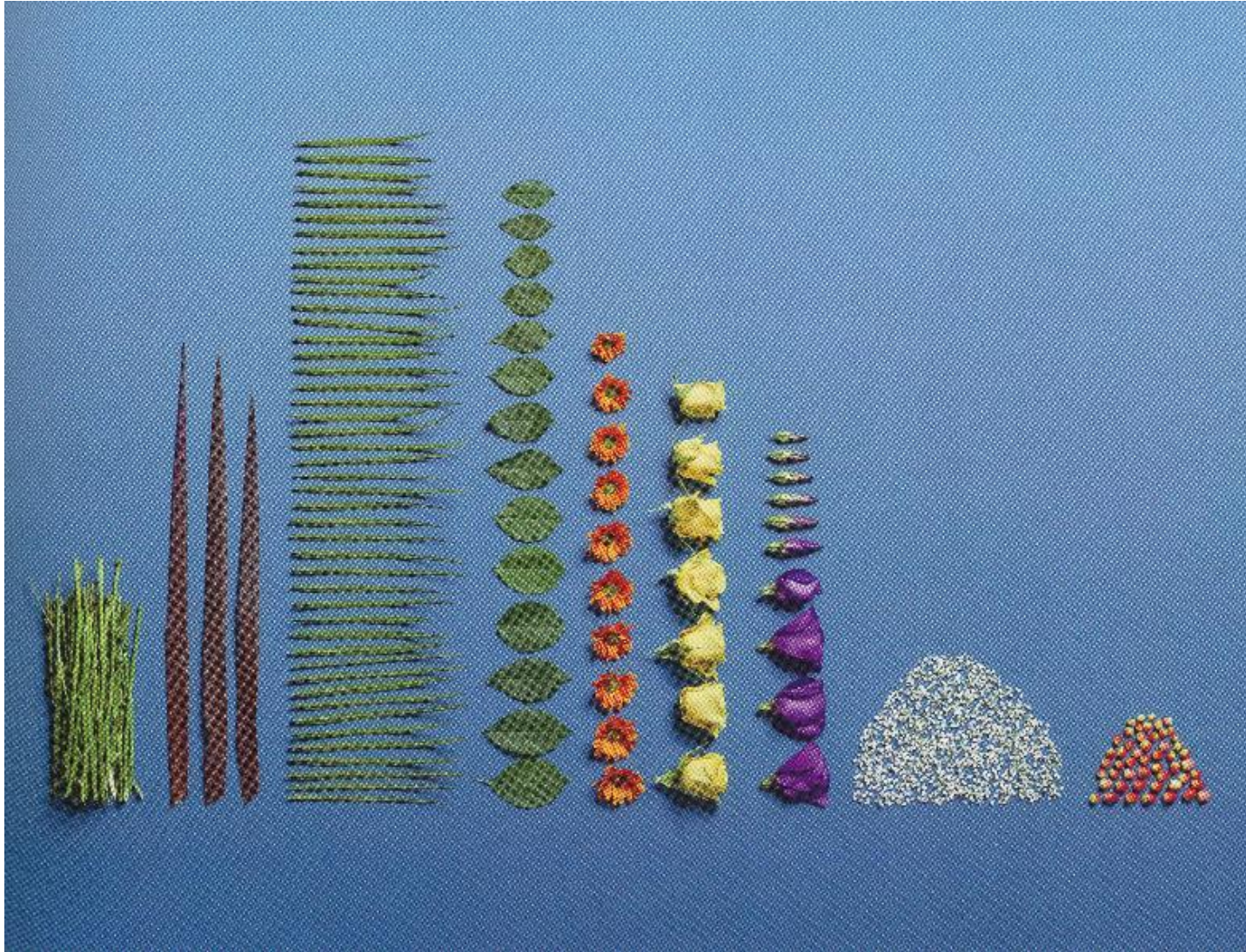
- Automation, robotization
- Increasing flexibility
- Energy transition
- Ageing population
- High shortages on the labour market



From "Chaos"



To structure: "Taxonomy"



Example of skills describing an occupation

- Hard skills / tasks
- Softskills (competences)
- Knowledge elements
- Working conditions

- Adjust machines
- Monitor production proces
- Develop ICT-applications

- Plan and organize
- Adapt to change
- Present

- Risk Management
- Tender procedure
- Communication techniques

- Standing
- Variable work schedule
- Work at high altitude

CompetentNL so far

750 occupational groups

4700 tasks

3200 reference occupations

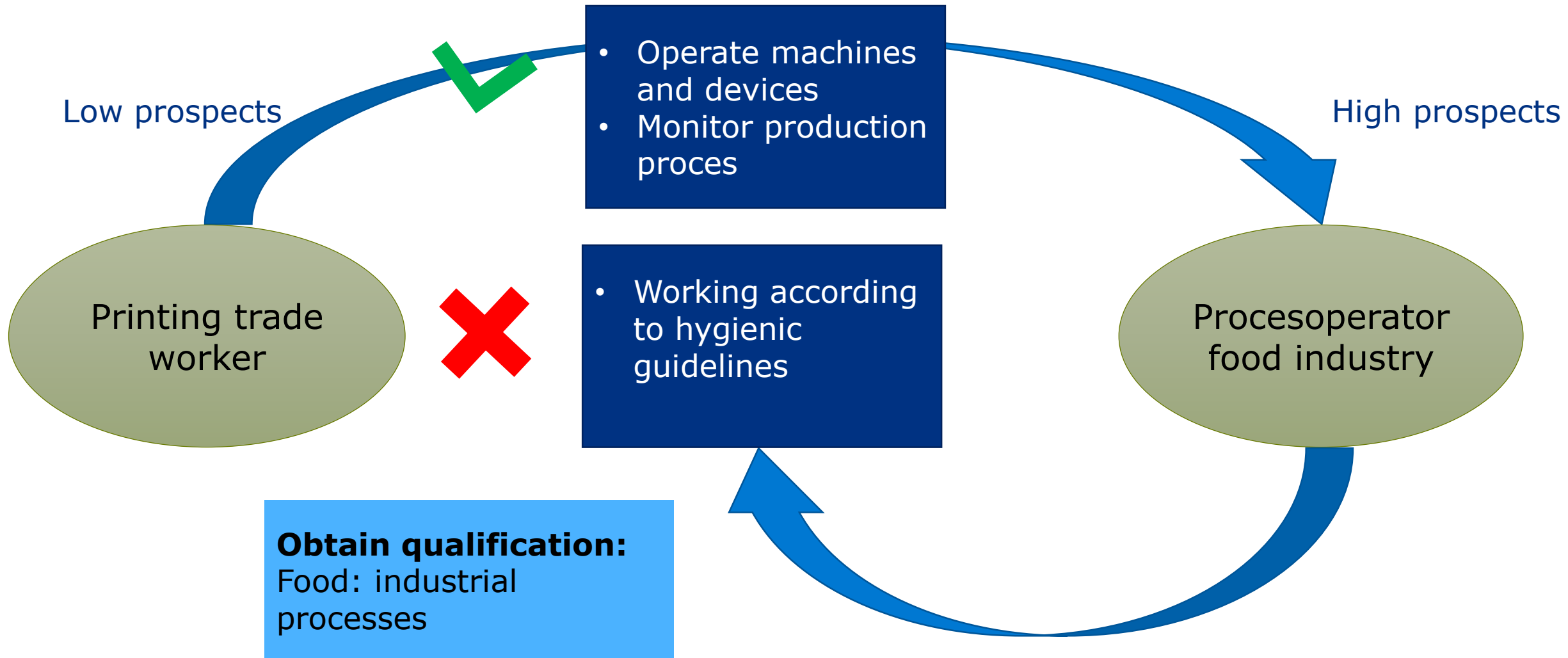
40 hard skills

60 soft skills

50 knowledge elements

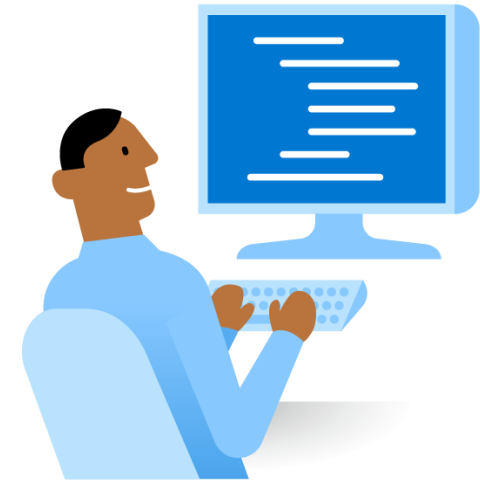
20 working conditions

Labour transitions

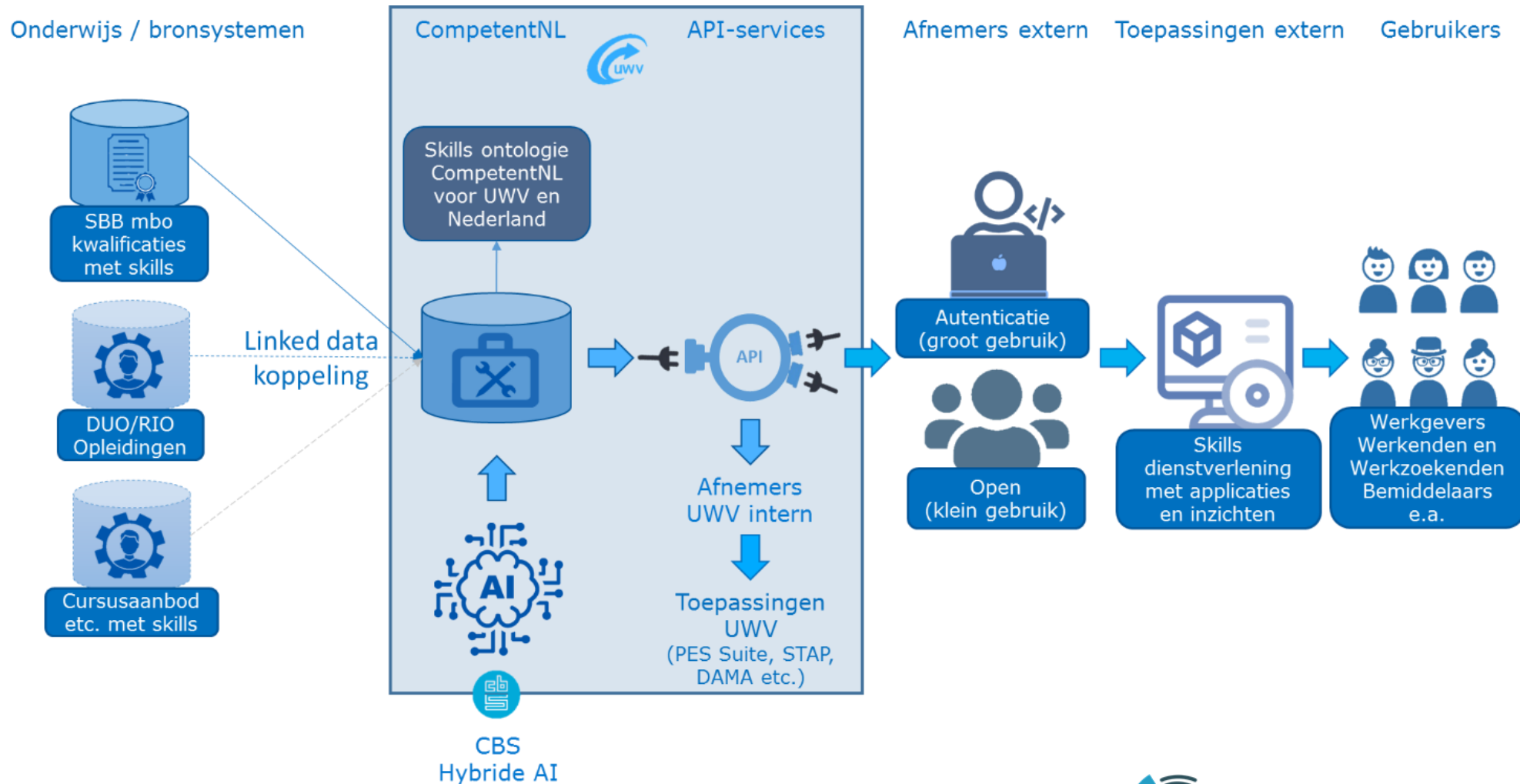


Next steps

- Market review
- Continue the use AI/Machine learning job vacancy data
- Map/crosswalk to other occupational standards (O*net, ESCO skills)
- Linked to qualification structure
- Launch of API services 2024



CompetentNL 2024: National standard for occupations, skills and qualifications.





competentnl

CompetentNL wordt
in opdracht van de
ministeries OCW en
SZW ontwikkeld door:

TNO innovation
for life



beroepsonderwijs **bo** bedrijfsleven